



Ethics Framework and Guidelines:  
A guide for research funding organizations  
implementing participatory activities

**pro**Ethics

# Ethics Framework and Guidelines:

## A guide for research funding organizations implementing participatory activities

**Authors:** Wiarda, Martijn (TU Delft), Giannelos, Kalli (Sciences Po), Schuerz, Stefanie (ZSI), Reber, Bernard (Sciences Po), Doorn, Neelke (TU Delft)

**Linguistic version:** Original: EN

Manuscript completed in June 2023.

### Author credits:

Wiarda, Martijn (TU Delft): Final version: Writing – Original Draft Preparation, Writing – Review and Editing, Conceptualization, Investigation

Giannelos, Kalli (Sciences Po): First draft: Writing – Original Draft Preparation, Writing – Review and Editing, Conceptualization, Investigation

Schuerz, Stefanie (ZSI): Final version: Writing – Original Draft Preparation, Writing – Review and Editing, Investigation, Project Administration, Language Editing

Reber, Bernard (Sciences Po): First draft: Supervision, Writing – Original Draft Preparation, Conceptualization

Doorn, Neelke (TU Delft): Final version: Supervision. First and final version: Writing – Original Draft Preparation, Writing – Review and Editing, Conceptualization

### Reviewers (in alphabetical order):

Diependaele, Lisa (EC RTD), Glennie, Alex (Nesta), Gold, Margaret (University of Leiden), Kritikos, Mihalis (EC RTD), Mayer, Katja (ZSI, University of Vienna), Montanari, Cléa (University of Paris), Spoof, Sanna-Kaisa (Finnish National Board on Research Integrity, ENRIO), Schuch, Klaus (ZSI), Varantola, Krista (Finnish Academies, ALLEA), Wroblewski, Angela (IHS), Zolho, Nyangala (Nesta)

### Contributors (in alphabetical order):

Alves, Elsa (DBT), Barajas, Ascensión (CDTI), Cimperman, Reda (RCL), Delaiti, Davide (EUREKA), Gerold, Markus (VDI/VDE-IT), Geyer, Gerda (FFG), Grohmann, Steph (LBG OIS Center), Haugan, Siv (RCN), Johansen, Kristin Eikeland (RCN), Mayer, Sabine (FFG), Nauni, Anila (RCN), Østrem, Erna Wenche (RCN), Owesen, Ingeborg (RCN), Rekve, Kristoffer (DBT), Rødland, Anne Winsnes (RCN), Roman, Alexandra (UEFISCDI), Stubbe, Julian (VDI/VDE-IT), Studený, Luboš (TA CR), Sturn, Dorothea (ZSI), Verstraete, Cédric (Innoviris), Vitic, Jelena (EUREKA)

**Copyediting and design:** Sciad Communications

### Disclaimer and copyright:

This recommendation paper was developed and written in the context of the H2020 project PRO-Ethics [grant number 872441] from 2020-2023. The framework reflects the theoretical and empirical data and experiences collected in this time, as analyzed and synthesized by the authors of this document with support from the project consortium. The content of the document is the sole responsibility of its author(s) and any opinions expressed herein should not be taken to represent an official position of the European Commission.

The content of this publication is licensed under a Creative Commons Attribution-NonCommercial-ShareAlike 4.0 International License. <https://creativecommons.org/licenses/by-nc-sa/4.0/>

### Cite as:

Wiarda, M., Giannelos, K., Schuerz, S., Reber, B., Doorn, N. (2023) Ethics Framework and Guidelines: A guide for research funding organizations implementing participatory activities. DOI: <https://www.doi.org/10.5281/zenodo.8089673>



# List of Abbreviations

**AI** Artificial Intelligence

**EC** European Commission

**ECSA** European Citizen Science Association

**EU** European Union

**GDPR** General Data Protection Regulation

**OECD** Organisation for Economic Co-operation and Development

**R&I** Research and Innovation

**RRI** Responsible Research and Innovation

**RFO** Research Funding Organisation

**SSH** Social Sciences and Humanities

**UNESCO** United Nations Educational, Scientific and Cultural Organization

# Table of Contents

<b>Preamble</b>	4
<b>Introduction</b>	7
<b>Part I: General Consideration</b>	8
<b>On ethics</b>	8
General considerations on ethics	8
Ethical assessment procedures and the ethics review	9
<b>On participation</b>	10
General considerations on participatory practices	10
Experiences with the ethics framework	13
<b>Part II: Tools &amp; Guidelines</b>	16
A) How should participatory processes be structured?	19
B) Which type of activity is targeted by the participatory process?	21
C) Which types of participants are targeted?	24
D) What are ethical issues and risks?	26
E) How can equal and meaningful dialogue be fostered?	28
F) How should participatory processes be monitored and reflected upon?	29
<b>Glossary</b>	31
<b>Endnotes</b>	37

# Preamble

## What is this framework and who is it for?

**This framework supports the ethical preparation, implementation, and evaluation of participatory processes in research funding and (applied) research & innovation (R&I).**

It is intended to help the user understand the context within which they undertake participatory activities and guides them through mapping and addressing ethical challenges and limitations that might arise in the process.

The framework has been developed with a focus on the activities of research funding organizations (RFOs), including participation in strategy development and agenda setting, call topic definition and formulation, (project and proposal) evaluation processes, and R&I projects.

It addresses different contexts, resources, and (stakeholder) needs that impact decision making to ensure that participatory processes are carried out in an ethical manner. It also provides guidance to implement stakeholder participation while upholding principles of fairness, transparency, equality, privacy, and sustainability. Our guidelines have been set up to support ethics review and evaluation procedures that assess the planning and implementation of participatory processes and provide a frame of reference for stakeholders to discuss and understand participation in R&I.

## Why does ethical participation matter for RFOs?

There is a strong push to open up R&I processes to broader audiences, in order to achieve several aims, including: promoting inclusion; raising the effectiveness, validity and applicability of (scientific) interventions; creating a better and/or wider evidence-base for policy and decision making; and to more closely align R&I processes with societal needs.

This should, in turn, enable R&I to better address highly complex, uncertain, and contested societal challenges that depend on collaborations between science, technology, society, and policy.<sup>1</sup> In this context, RFOs play a crucial role. Operating at a regional, national, international and global level, they are responsible for setting R&I agendas and framing topics addressed in calls. They also codetermine the scope, content, direction, outputs and potential impacts of research.<sup>2</sup>

However, engagement of societal groups in the processes of RFOs, and R&I in a broader sense, can be challenging. Questions we must ask when preparing and implementing stakeholder participation include: What kinds of processes should stakeholders be involved in and how? How do we enable and empower participants to make decisions? How do we choose the right participants and the right processes? How can biases be managed and mitigated? How do we need to care for participants during their involvement? How do we ensure the privacy rights of participants? And how can activities

be carried out in line with basic principles and values of research ethics and integrity?

The aim of the ethics framework is to ensure that participation is meaningful for participants and organizations, to inspire and guide the preparation, implementation, and evaluation of ethical participation, and to increase support for stakeholder participation in R&I. As such, it is a tool for safeguarding the effectiveness, ethics, and justification of stakeholder participation.

## **How were the ethics framework and guidelines developed?**

This framework is the main output of the EU-funded PRO-Ethics project. Contents were developed through an iterative process, building on insights from current literature as well as data primarily collected from 10 pilot projects, which were implemented in two phases. Four of these took place at the beginning of the project, providing experiential inputs to the development of the first draft of the framework and guidelines. During the six pilots of phase II, the draft framework was tested and improved upon. Each pilot project focused on engaging “non-traditional” stakeholders in the processes of RFOs, which entails stakeholders who are not usually involved in such activities. For PRO-Ethics, this included citizens in the broadest sense, residents of an area, end-users of a technology, people affected by a specific issue, and beneficiaries of funding calls.

Feedback was also gathered from civil society, researchers, citizen science practitioners, research funding organizations, research

ethics committees, research integrity organizations, and others involved in the preparation, implementation, and evaluation of participatory processes. Feedback was obtained through surveys, workshops, open consultation, direct commentary and in co-creative efforts.

## **About PRO-Ethics**

PRO-Ethics was a four-year Horizon 2020 project with the objective of creating and testing an ethics framework, guidelines and examples of best practice to help organizations engage stakeholders, while respecting principles of fairness, transparency, equality, privacy, and sustainability. PRO-Ethics used an iterative process with learning loops between eight participating RFOs, five expert partners and two international organizations. While PRO-Ethics had a Pan-European outlook, it incorporated and compared local conditions and other specific and cultural characteristics of the partnering RFOs from Austria, the Czech Republic, Germany, Lithuania, Norway, Romania, Spain, and the Brussels Capital Region, which implemented the PRO-Ethics pilots.

The consortium was made up of ZSI (project coordinator), DBT, TU Delft, Sciences Po, Nesta, Eureka, EUREC Office, Innoviris, RCN, CDTI, FFG, VDI/VDE-IT, UEFISCDI and RCL. TA CR was initially a part of the consortium but had to discontinue its involvement after two years. LBG OIS Center was subsequently involved in the project through funding distributed via an open call.

## Acknowledgements

These framework and guidelines were developed with valuable input from project partners CDTI, FFG, Innoviris, RCN, RCL, TA CR, UEFISCDI, VDI/VDE-IT, and associated partner LBG OIS Center. These organizations implemented pilot projects from which evidence was drawn and in which the framework and guidelines were tested and refined in an iterative manner.

Similarly, numerous experts in various fields – including citizen science practitioners, representatives from research ethics committees and research integrity organizations, and other research funding organizations outside our consortium – participated in our interactive activities to give feedback, and identify gaps and potential areas of use for the framework. The members of our advisory board – Margaret Gold, Krista Varantola, Angela Wroblewski and Sanna-Kaisa Spoo – played a key role in supporting the pilots and reviewing the framework and guidelines at various stages of the process. We would also like to thank the many stakeholders, including citizens, end-users, and project beneficiaries, who took part as participants in our pilots and provided valuable feedback.

We are thankful to the European Commission for funding the PRO-Ethics project and providing expert commentary. This enabled the work done within the project and was essential to the development of the ethics framework and guidelines. Special mention must go to Lisa Diependaele, Dorian Karatzas, Mihalis Kritikos, and Roberta Monachello, whose support helped us realize our work.

This report was designed by Sciad Communications Ltd.

## Project partners

- CDTI** Centre for the Development of Industrial Technology (Spain)
- DBT** Danish Board of Technology (Denmark)
- EUREC Office** European Network of Research Ethics Committees (Germany, Europe)
- EUREKA** Intergovernmental organisation for research and development funding and coordination (Belgium, International)
- FFG** Austrian Research Promotion Agency (Austria)
- Innoviris** Institute for the promotion of research and innovation in Brussels capital region (Brussels, Belgium)
- LBG OIS Center Ludwig Boltzmann Society** – Open Innovation in Science Center (Austria)
- Nesta** formerly NESTA, National Endowment for Science, Technology and the Arts (UK)
- RCL** Research Council of Lithuania (Lithuania)
- RCN** Research Council of Norway (Norway)
- Sciences Po** Paris Institute of Political Studies (France)
- TA CR** Technology Agency of the Czech Republic (Czech Republic)
- TU Delft** Technical University Delft (The Netherlands)
- UEFISCDI** Executive Agency for Higher Education, Research and Innovation Funding (Romania)
- VDE** Association for Electrical, Electronic and Information Technologies (Germany)
- VDI** Association of German Engineers (Germany)
- VDI/VDE-IT** VDI/VDE – Innovation + Technology (Germany)
- ZSI** Center for Social Innovation (Austria)

# Introduction

As participatory engagement practices are increasingly recognized as a valid and often necessary dimension of research and innovation (R&I) – and specifically the work of research funding organizations (RFOs) – the need to establish strong ethical parameters and guidance for the implementation of such approaches is more important than ever. The work of PRO-Ethics has shown that established ethics review procedures are often unable to grasp the complexity of participatory processes, while the focus on compliance with existing legal and ethical regulatory frameworks fails to address the nuances and tensions of evolving multi-stakeholder processes.<sup>3</sup> As a result, decades of participatory research have emphasized **the importance of understanding the concrete context of implementation when setting up and realizing a participatory process.**

The ethics framework consists of tools and guidelines that support the ethical organization of stakeholder participation by respecting each processes' specificities. In the context of R&I funding, this document aims to operate as a standard for organizing participatory processes and addressing ethical issues and risks before and while they arise. This entails both research ethics in the broadest sense, and the ethics in and of participation more specifically. The framework addresses the diversity of views on ethics and participation, the specific practices of RFOs, and important contextual questions, such as: How is participation justified? What are the expected goals and outcomes? And what are the underlying ethical issues?

Over four years, the PRO-Ethics project encountered **a diversity of practices and understandings among actors** in how to approach the ethics of participation. **This framework aims to combine these different approaches into a comprehensive step-by-step guide for ethical participation in the activities of RFOs. As such, it may also prove valuable for other organizations interested in ethical participatory processes, such as research performing organizations, research ethics committees and research integrity bodies.** It provides questions to address in each stage of a participatory process – from its preparation and implementation to its evaluation. It also covers different contexts of implementation and guides the user to meet their differing requirements. Furthermore, it is compatible with, and complementary to, other frameworks, standards, and codes of conduct used in the context of R&I.

This document consists of two parts:

- A general description (theoretical introduction) of the framework's scope, objectives, and positioning, and how it should be applied. This part also includes experiences of RFOs using the framework.
- Tools, guidelines, and a glossary. The tools and guidelines offer "actions" to be considered for ethical stakeholder participation **before, during, and after the implementation of participatory processes.** Although they were developed for RFOs, they are relevant for broader audiences within R&I.



# Part I: General Considerations

## On ethics

### General considerations on ethics

There is broad consensus that R&I has a substantial impact on society. Innovations are not value-neutral but rather impose certain values, worldviews, and risks on society. By way of illustration, let us consider the possible implications of Artificial Intelligence (AI). AI is often associated with positive impacts such as the automation and optimization of tasks like fraud detection, quality control, and medical screenings. However, algorithmic decision-making also entails certain risks such as biases and discrimination, data misuse, and shifting job markets. These risks are subject to heated debates and show that ethical considerations are needed to ensure that R&I processes result in socially desirable and ethically acceptable outcomes.<sup>4</sup> This is especially urgent for ex-post ethical guidance for innovations already developed and embedded in society.

Researchers increasingly urge for early anticipatory and reflective deliberations that help collectively shape innovations when this is still possible<sup>5</sup> (see textboxes with examples of research trends that support participation). A substantial part of this support comes from research fields like Responsible (Research and) Innovation, Open Science, Transdisciplinary Research, Technology Assessment, Citizen Science, and Ethical and Legal Aspects/Implications Research. One of their commonalities is their support for 'upstream' stakeholder participation already in the phases of research funding.

Discussing ethical considerations through such participatory processes is one means of addressing the complexity, uncertainty, and contestation associated with (disruptive and/or controversial) R&I. Ethics cannot be reduced to standard procedures and legislation alone (soft law, ethical compliance), but is a discipline (from applied ethics to meta-ethics<sup>6</sup>) that extends the existing regulatory schemes governing the processes of R&I: **ethics helps decipher legitimacy, tensions, and adequacy of processes and legal compliance while being mindful of contextual specificities.**

### OPEN SCIENCE

*"Open science is a set of principles and practices that aim to make scientific research from all fields accessible to everyone for the benefits of scientists and society as a whole. [...] Open science has the potential of making the scientific process more transparent, inclusive and democratic."*

**United Nations Educational, Scientific and Cultural Organization (UNESCO)<sup>7</sup>**

### CITIZEN SCIENCE

*"Citizen science is an 'umbrella' term that describes a variety of ways in which the public participate in science. The main characteristics are that: (1) citizens are actively involved in research, in partnership or collaboration with scientists or professionals; and (2) there is a genuine outcome, such as new scientific knowledge, conservation action or policy change."*

**European Citizen Science Association (ECSA)<sup>8</sup>**

## TRANSDISCIPLINARY RESEARCH

*“Transdisciplinary research [...] is a mode of research that integrates both academic researchers [from unrelated disciplines – including natural sciences and SSH – and non-academic participants to achieve a common goal, involving the creation of new knowledge and theory. In drawing on the breadth of science and non-scientific knowledge domains such as local and traditional knowledge, and cultural norms and values, it aims to supplement and transform scientific insights for the good of society. It criss-crosses the traditionally separated realms of science and practice and advances both simultaneously.”*

**Organisation for Economic Co-operation and Development (OECD)<sup>9</sup>**

## RESPONSIBLE RESEARCH & INNOVATION

*“Responsible Research and Innovation is a transparent, interactive process by which societal actors and innovators become mutually responsive to each other with a view to the (ethical) acceptability, sustainability and societal desirability of the innovation process and its marketable products (in order to allow a proper embedding of scientific and technological advances in our society).”*

**René von Schomberg (2011)<sup>10</sup>**

The multitude of **ethical theories** suggests there are several ways in which ethics can be considered in R&I. For instance, ethics can focus on particular types of entities (i.e., action, person, institution, technology); normative factors (i.e., values, consequences, virtues or norms); and foundational normative theories (ways to select normative factors and types of entities). Conflicting factors or hybrid forms of reasoning call for a move beyond regulations (as in ethics reviews/assessments), and to embrace a broader pluralistic scope. These views demand enhanced reflexivity and responsibility.

## Ethical assessment procedures and the ethics review

Ethical compliance and appraisals such as ethics reviews in research funding tend to stay close to legal standards and regulations and in turn do not comprehensively cover intricate ethical conundrums as they arise during complex R&I processes – especially if they are structured as participatory processes. Publicly funded R&I is associated with forms of ethics assessment procedures, safeguarding the compliance of (to be funded) research with ethical principles. However, ethics reviews differ across countries and institutions, and ethical procedures are not systematically implemented in funding programs. **The connection between ethical reviews and participation remains underdeveloped, as their link is often unspecified.**

Ethical reviews require skills and knowledge that researchers and innovators frequently lack. Ethical analyses require familiarity and conformity with standards and an understanding of approaches to build, recognize, and justify ethical dilemmas in light of conflicting values. The notions of “right” and “wrong” are based on moral values (ideals), principles and norms that define standards – identified as “ethical principles” – some concerning individual rights, benefits, harms, fairness principles, and virtues.

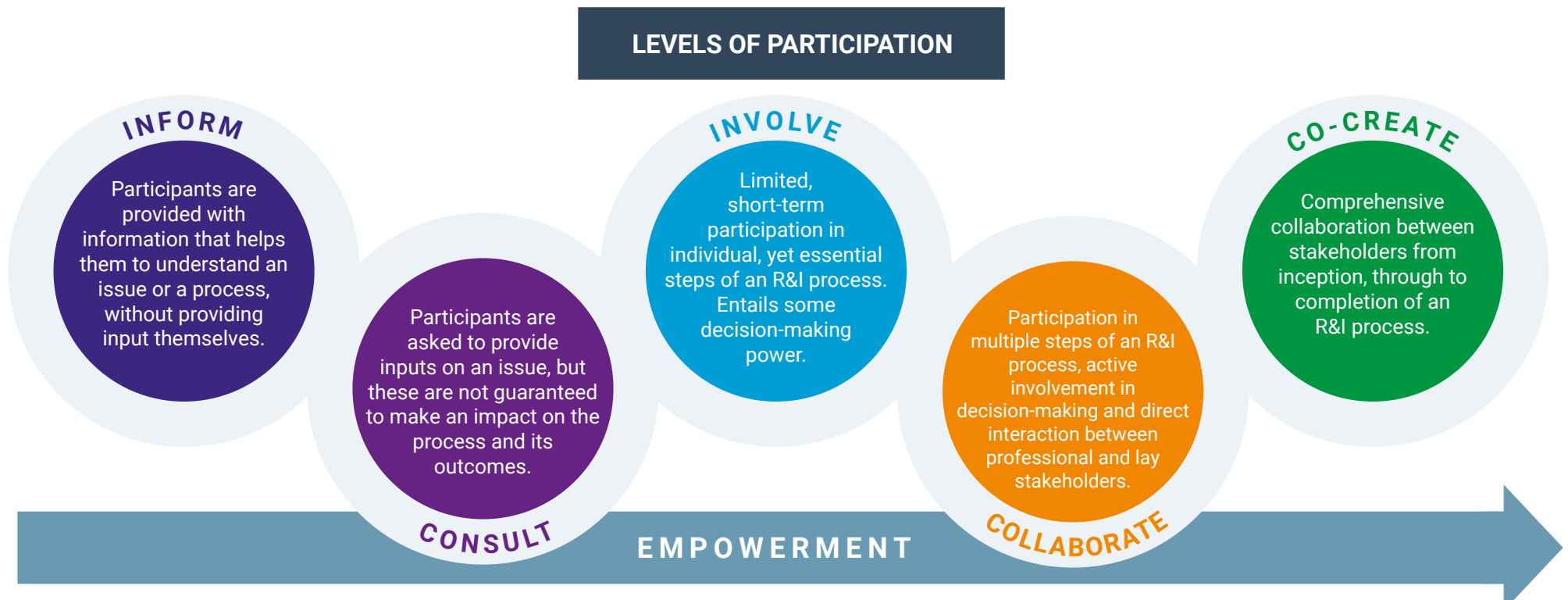
Identifying possible ethical issues provides guidance for R&I and helps reflect on its implications. It may also enhance the transparency and accountability of decision-makers and could lead to better processes. As such, **ethical considerations help address the complexity, uncertainty, and contestation associated with R&I, making these processes more responsible.** Because it is impossible for one single stakeholder group to have a comprehensive understanding of societal risks and uncertainties,

identifying and weighing ethical considerations can be supported by involving a more diverse set of stakeholders<sup>11</sup>. Such complementary perspectives allow for a more thorough grasp of both the risks and potential benefits associated with complex R&I processes, anchored in the lived experiences of affected individuals<sup>12</sup>. Thus, all dimensions of R&I, including research funding processes, could benefit from stakeholder participation.

## On participation

### General considerations on participatory practices

This ethics framework is aligned with the European Commission’s strategy on research and innovation, which aims at “strengthening a common ownership of research and innovation policy and promoting the common research and innovation values” through



Schuerz, Stefanie (2023): Levels of Participation in Research and Innovation. DOI: [10.5281/zenodo.8096864](https://doi.org/10.5281/zenodo.8096864)

the co-design and co-creation of R&I activities<sup>13,14</sup>. Participation is a crucial part of movements such as Responsible Research & Innovation<sup>15</sup> and Technology Assessment<sup>16</sup>. While there is no uniform definition, participation is frequently described as a form of engagement that allows (potentially) affected stakeholders to partake in decision-making for R&I<sup>17</sup>. Following the many theoretical approaches building on Arnstein's ladder of participation<sup>18</sup>, truly participatory practices are arguably different from other engagement practices in that they empower stakeholders to varying degrees to shape decisions in accordance with their own values and worldviews. In this, there is a trade-off between the possible control exercisable by researchers, funders, policymakers, and so on, and the level of empowerment experienced by other stakeholders. Participatory practices are further distinct from other engagement forms as they require two-way communication between the participant and decision-maker<sup>19</sup>. Thus, when structuring and implementing a participatory process, there are many decisions to be made, all of which have ethical implications.

There are numerous supporting and opposing arguments for participation<sup>20</sup>. As discussed in our overview on ethics, participation is needed to identify and weigh ethical considerations to arrive at more socially desirable and ethical outcomes. Participation is furthermore supported by the assumption that tackling complex public problems requires collective decision-making to foster more effective outcomes<sup>21</sup> (substantive rationale). What is more, participation is often argued to enhance the trust in, and the legitimacy of, R&I. Stakeholder participation may also lead to an increased support and adoption of outcomes (instrumental rationale). From a democratic perspective, participation may moreover be considered 'the right thing to do' as potentially



affected stakeholders can influence how their lives are being shaped (normative rationale). Yet, participation is not always deemed desirable and is often opposed by those who consider that scientific work is already exposed to many constraints both internally and externally (e.g. international competitiveness).

The relationship between participation and ethics can be complex and ambiguous. It differs in each instance, depending on the chosen approaches, types of stakeholder, and aims of the decision-making process. Examples of possible approaches include participatory evaluation, citizen juries, consensus conferences, deliberative opinion polls and citizen advisory committees. While participatory decision-making processes can aim to achieve consensus or compromise, they might also allow for (productive) disagreement as a result of an activity.

**Another key issue to address when implementing participatory processes is who exactly should be engaged.** Participatory processes are increasingly targeted at “citizens” or “stakeholders” – terms which are not synonymous, nor do they represent the whole array of potential participants. In any case, it is important to be aware that the terminology chosen for prospective participants

has consequences for who may be included – and who excluded. Thus, the language used must be critically reflected and chosen carefully<sup>22</sup>. For instance, “citizen” also has a legal meaning tied to nationality which might not be intended when employing the term in a participatory process<sup>23</sup>. Participants can be of various kinds, extending beyond the traditional expert (scientist or researcher) and including, for example, experts by experience and civil society representatives. Other categories essential to consider, both when defining a stakeholder group and when engaging a specific group of participants, include gender, dis/ability, socio-economic background, age, geographic location, and ethnicity. The relevance of different groups of participants will vary depending on the exact context of the process.

In light of the various definitions, rationales, approaches, roles, and types of participants, **a taxonomy is presented in this ethics framework as a guideline and common reference point for our working definitions.**

PRO-Ethics identified several needs of RFOs employing participatory approaches. These relate to: the definitions of participation and ethics in R&I; ethical dimensions and potential issues; ethical risks and their mitigation; the need for checklists specifying what to consider when involving participants; and considerations regarding ethical challenges, (structural) biases, and points of attention. Specific issues have also been identified when different interests and types of knowledge intersect, as well as in terms of the methods to be employed. Subsequently, participation should be approached in the context of each individual case, and with appropriate questions addressed.

The perceived benefits and legitimacy of participatory processes differ among stakeholders. There are various factors that play a role in participation, such as: the needs of RFOs and the resources at their disposal; the potential modes of participation and their appropriateness to the task; and the ethical challenges and issues of participation critical to RFOs (identification and representation of participants, avoidance of biases, use of personal data, etc.). All these factors were considered when developing the tools and guidelines in this ethics framework.



## Experiences with the ethics framework

In the context of the PRO-Ethics project, nine RFOs experimented with this ethics framework for their stakeholder participation processes. **Collective reflections on the framework's use revealed challenges and potential solutions that may prove valuable for future participatory processes.** These 'lessons learned' related to: the recruitment of participants; managing commitment and expectations; fostering of dialogue and equal participation; accommodation of vulnerable groups; creation of funding themes with participants; lack of expertise in participatory ethics; and planning, flexibility, and resources.

RFOs indicated difficulties in relation to the recruitment of participants. While they generally aimed for heterogeneous groups that appropriately represented all relevant stakeholders, these were often difficult to determine and subsequently assemble. In piloting participatory processes, the project's RFO partners selected stakeholders on various criteria, such as their socio-economic background, education, age, religion, ethnicity, and gender (identity). This in turn posed challenges in terms of intersectionality, as participants may identify with multiple stakeholder groups. A possible way forward is to allow stakeholders to self-categorize according to their own understanding of their identity. In addition, because the understanding of 'correct' representation tends to vary among different stakeholders, this question cannot be addressed in a standardized manner, but must be considered in the context of each specific participatory process. Still, RFOs must consider whether representation that 'accurately' reflects society is desirable at all, given that the politics among participants will then likely reflect the dynamics found in society. For instance, it

may be desirable in some cases to give minorities a stronger voice to mitigate power imbalances.

RFOs also found recruitment of their targeted stakeholders more difficult than anticipated. In practice, there is often a disparity between which stakeholders should be involved (in terms of desired representation), and which can be recruited (in terms of willingness, capacity, resources, recruitment efforts, etc.). Not every stakeholder potentially affected by R&I is interested in participation. The RFO partners therefore relied on practical solutions, such as snowball sampling and using multiplier organizations to recruit participants, while acknowledging the drawbacks of such methods (e.g. selection bias). Employing the support of experienced recruiters may also help address some of these challenges.

**Managing commitment and expectations** posed challenges as stakeholders have different views on R&I, RFOs, and concrete participatory processes. Experiments suggest it is important to understand, and to accommodate, the needs of participants. Some stakeholders may require different forms of participation or may need financial compensation. It proved helpful to transparently communicate everyone's expectations regarding the roles, scope, purpose, process, and outcomes of the participatory activity. Such expectations may also be made explicit in a (co-created) code of conduct.

Difficulties also emerged during the participation process in relation to organizing **meaningful dialogue and equal participation**. Equal participation is deemed important to gather values and worldviews relevant to the R&I process, but because stakeholder participation is often characterized by diverse perspectives, this

poses the risk of misinterpretation and conflict. Furthermore, some perspectives might dominate discussions as a result of personalities, knowledge, or institutional roles (e.g. citizens vs. scientists). Mitigating knowledge-based domination may require a thematic 'warm-up' for both citizens and scientists. Deploying a facilitator who is gender- and diversity-competent could also help mitigate conflict and imbalances by steering discussions and safeguarding the involvement of less vocal participants. Mutual trust among participants can be fostered by choosing an external mediator who takes on a neutral role during discussions. It can also be beneficial to reduce information asymmetries by either offering or withholding information.

The RFO partners also indicated challenges in the **accommodation of vulnerable groups**<sup>24</sup>. This is particularly relevant as participatory processes in research funding often relate to solving real-life problems. The stakeholders affected by these problems may therefore be subject to social injustice, financial issues, or other pressures and risks. Because vulnerability is difficult to define and understand, it is useful to consider the factors that make stakeholders vulnerable, such as their resources, abilities, experiences, identities, values, and worldviews. As stakeholders generally have the best insight into their own vulnerability, it can be helpful to gain their perspective rather than rely on assumptions made by the RFO. RFOs could also help accommodate vulnerable groups by listening to their suggestions, and by addressing the underlying issues that give rise to disadvantages, e.g., through financial compensation, the use of translators, or the enhanced accessibility of meetings.

In the case of **stakeholder participation for the creation of funding themes/priorities**, some RFOs experienced difficulties determining how to involve both traditional stakeholders (scientists and innovators) and non-traditional stakeholders (e.g. citizens). The RFOs recognized three possible ways to involve both groups: (1) traditional stakeholders propose themes, which non-traditional stakeholders select and contextualize; (2) non-traditional stakeholders propose themes, which traditional stakeholders then select; or (3) themes are proposed and selected collectively. While all three approaches may yield results, RFOs found that collective discussions tended to give rise to power imbalances (e.g. based on expertise and status). Allowing non-traditional stakeholders to propose themes yielded many socially relevant topics, but these were not always considered scientifically relevant. On the other hand, streamlining the process, by allowing traditional stakeholders to propose themes for non-traditional stakeholders to select, ran the risk of tokenism due to the limited decision-making power of the latter group. As such, all approaches have advantages and drawbacks, and the appropriate approach likely remains context dependent.



While skills and knowledge on ethics and participation are believed to improve stakeholder participation, **RFOs frequently lacked ethical and participatory expertise**. RFOs indicated that the ethics framework is helpful, but that external support from ethicists, facilitators, and recruitment agencies can improve the quality of participation. It is nevertheless helpful to recognize that organizing stakeholder participation benefits from a 'learning-by-doing' approach that is flexible and open to feedback from its participants. RFOs subsequently benefit from people with the right mind-set, i.e., openness, social skills, and the willingness to learn and engage.

Lastly, it is important to stress that, **while the ethics framework strives for the highest ethical standards, it may not always be possible to meet these in practice**. Organizing stakeholder participation is an uncertain process that does not always unfold according to plan. One RFO remarked that *"these processes seem*

*way more resource consuming than thought in the beginning"*. Participatory processes are also dependent on external factors (e.g. regulations, operational planning). All these challenges indicate that it is helpful to have a surplus of resources available, and to have back-up plans in case flexibility is needed.



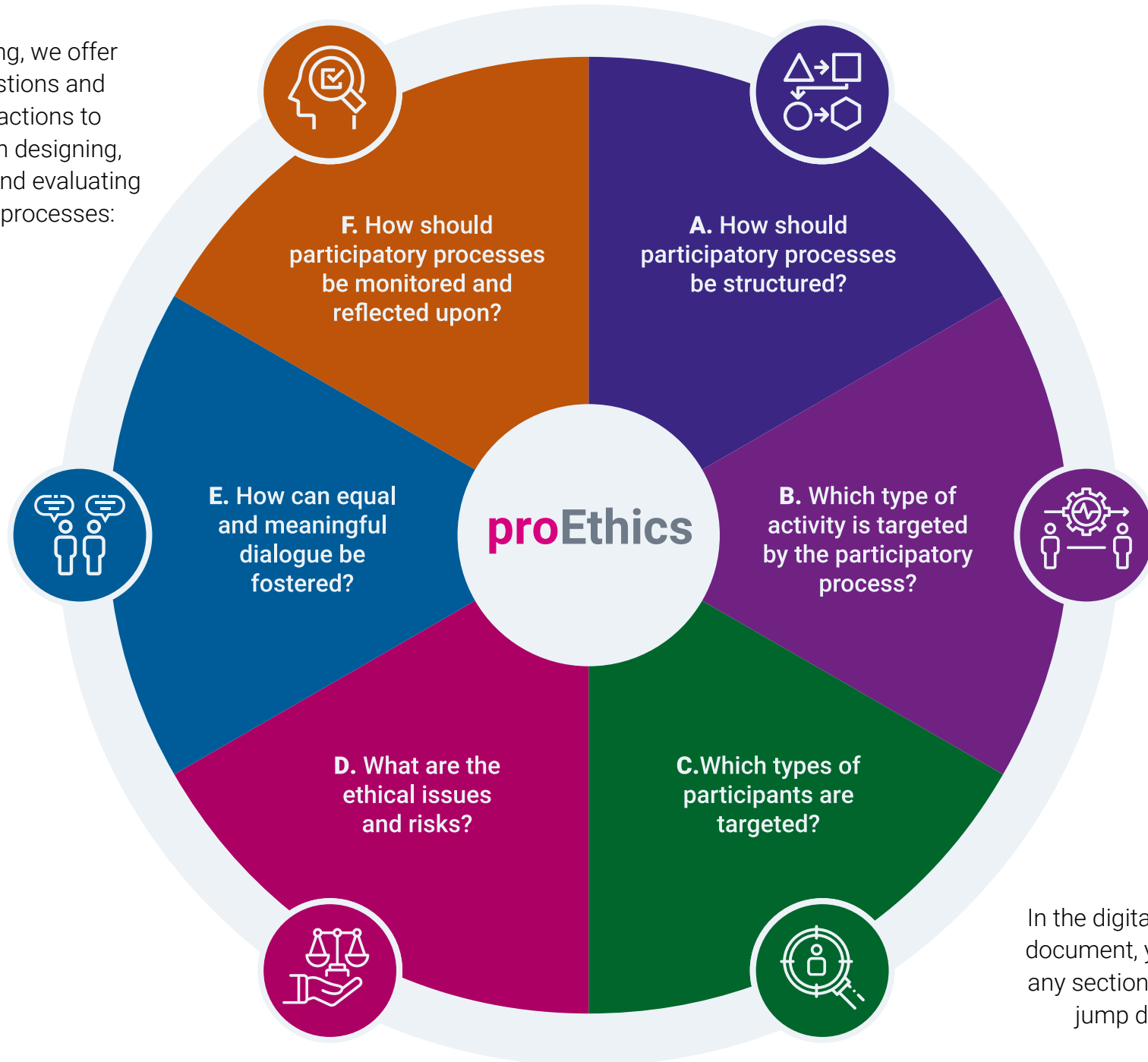


## Part II: Tools & Guidelines

Considering the complex relationship between participation and ethics, how should participation be organized and framed? Rather than providing broad criteria, **this ethics framework offers a list of questions for consideration**. The purpose of the PRO-Ethics Tools & Guidelines is to provide a context-sensitive roadmap in the form of questions for the design, implementation and evaluation of stakeholder participation. Because different contexts offer different opportunities and constraints, **this ethics framework provides guidelines as opposed to rigid rules**. The questions, considerations, and classifications below address the **ethical aspects that need to be considered when planning different types of participatory activities**: who, when, how, and why does it matter?

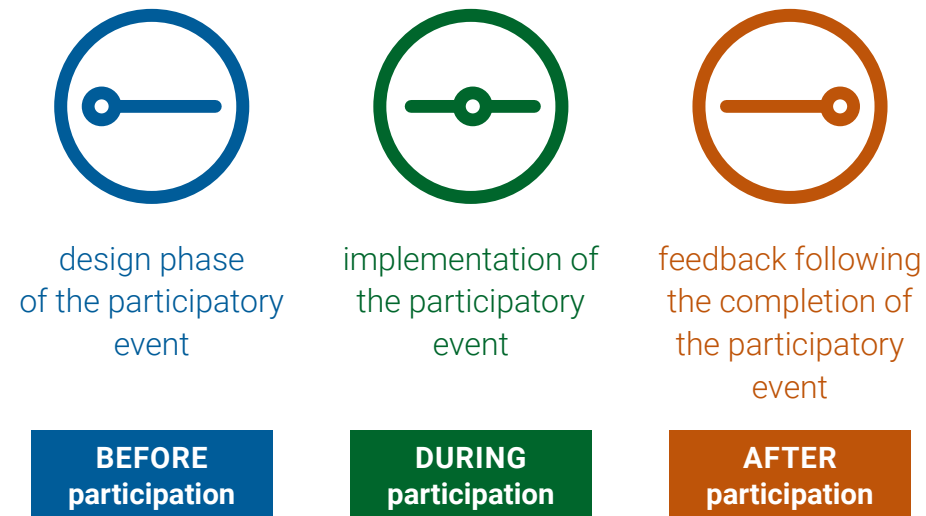
Consideration of these questions is intended to define how stakeholders can be identified and invited to participate in R&I processes, using a **pluralistic, ethical approach** that may provide added value as laid out above. Ethical issues are guiding these tools, leading to a list of dimensions and questions to address as **a roadmap for the diversity of methods and options for participatory approaches**. The purpose of this ethics framework is to provide tools and guidelines to determine whether participation is warranted and what actions and considerations should be undertaken in order to ensure that participation is inclusive and ethical. The most suitable participatory path in each instance derives from a consideration of the context and the specific needs of both the institution undertaking it and of the R&I process that it is applied to. Although this ethics framework is designed primarily for RFOs, it may well prove helpful for other organizations.

In the following, we offer a set of questions and associated actions to consider when designing, implementing and evaluating participatory processes:



In the digital version of this document, you can click on any section of the wheel to jump directly to it.

Each section includes an indicative timeline which has been highlighted for each specific subset. These indications serve to identify *when* a specific action is to be undertaken. They may be cumulative in the case of an iterative action, taking place at different stages of a process:



The framework is concluded by a **glossary of key terms** used when discussing participation in research and innovation. This glossary aims to support the development of a common language and shared understanding, and thus facilitate the effective implementation of such processes to a high standard.



## A. How should participatory processes be structured?



### **ACTION A1: Understand the structural constraints you are operating under**

Reflect on the structural context you are operating in and outline existing dependencies that affect the implementation of your participatory process. Identify existing rules and procedures relevant to your process (institutional, legal, and other) and investigate how much flexibility you have to adapt these. Determine what decisions you may make independently, where you need to secure buy-in from other institutional actors, and how much decision-making power you may relay to participants. Secure a mandate and resources (time, budget, personnel) to implement the participatory process.



### **ACTION A2: Identify and clarify the expected contributions**

Identify why you and potential participants are interested in collaborating, what roles each stakeholder might have, and what types of knowledge and perspectives are sought. This also needs clarity on the expected goals and impacts of the process. Transparently clarifying these from the beginning and throughout the process helps to manage and align expectations on both sides, particularly regarding the impact of the process and how interactions should be structured. This also helps frame, justify, and outline participatory processes for more focused, ethical, and appropriate implementation.



### **ACTION A3: Allow for flexibility when planning the participatory process**

Stakeholder participation benefits from being organized in an iterative and agile process. Due to its complexity, unexpected nuances and concerns usually arise in the making. This calls for organizational flexibility, which can be fostered by proactive approaches to risk management. Sufficient time and resources must be allocated to the participatory process. These resources and chosen participatory methods<sup>25</sup> contribute to the flexibility and quality of the process and need careful consideration.



## A. How should participatory processes be structured?



### **ACTION A4: Explore possible, probable, and desirable impacts of R&I**

Identify the potential social, political, institutional, economic, environmental, or other impacts that R&I processes may have, including potential negative impacts stakeholders would like to avoid. Try to be comprehensive and cover all potential stakeholder groups in your assessment. Impacts are best anticipated in inclusive settings and can be better understood by involving the stakeholders that may be affected. Impacts should be listed and related to the design and outcomes of participatory processes. Consider collectively what steps should be taken to mitigate risks and realize desirable outcomes.

Be mindful of the fact that all impact assessment models have a specific scope and a limited focus. They are best seen as tools to support a better structure and understanding of your participatory process and the outcomes you want to achieve. Good online resources to consult on impact assessment include:

<https://www.betterevaluation.org/>

<https://www.fasttrackimpact.com/>

<https://impact.nwo.nl/en/working-with-an-impact-plan>

[https://www.europarl.europa.eu/RegData/etudes/STUD/2021/690031/EPRS\\_STU\(2021\)690031\\_EN.pdf](https://www.europarl.europa.eu/RegData/etudes/STUD/2021/690031/EPRS_STU(2021)690031_EN.pdf)

[https://commission.europa.eu/system/files/2021-11/swd2021\\_305\\_en.pdf](https://commission.europa.eu/system/files/2021-11/swd2021_305_en.pdf)

### **SHOWCASE**

VDI/VDE-IT learned that the identification of expectations should be one of the first steps when structuring participatory processes. Participants in their pilot expected concrete solutions that would solve their everyday problems. Yet, in many cases this was deemed too optimistic by the funding organization. Recurring clarifying conversations and codes of conduct helped align expectations about the process, its scope and goal, the intended outcomes, and everyone's concrete responsibilities.



## B. Which type of activity is targeted by the participatory process?



### **ACTION B1: Define for which type of activity a participatory approach is undertaken**

An appropriate context, type and timing for the participatory process has to be selected (see below). This can be very limited, covering only one activity within a larger process, or it can be comprehensive, beginning at the planning phase. Build on impacts defined in A4 and take into account the stakeholders' relationship with, and potential contribution to, the R&I process.

Research funding organizations have a special position in R&I ecosystems. On top of funding and supporting scientific projects that build on or employ participatory methodologies, they can also involve stakeholders in RFO-specific activities, such as:

- Developing R&I strategies
- Setting funding priorities
- Defining and formulating funding calls
- Evaluating project proposals
- Mentoring R&I projects
- Monitoring R&I projects
- Evaluating R&I projects

There are many different participatory formats, including citizen juries, citizen advisory boards, consensus conferences, focus groups, deliberative opinion poll, negotiated rulemaking, participatory evaluation, and so on. Good online resources to consult on participatory formats include:

<https://involve.org.uk/resources>

<https://participedia.net/>

Cos4Cloud Methodological Guide (Co-Design): <https://zenodo.org/record/7472450#.Y9Pqii8rzs3>

Participatory AI for Humanitarian Innovation: [https://media.nesta.org.uk/documents/Nesta\\_Participatory\\_AI\\_for\\_humanitarian\\_innovation\\_Final.pdf](https://media.nesta.org.uk/documents/Nesta_Participatory_AI_for_humanitarian_innovation_Final.pdf)



Evaluation of projects and programs and their (potential) impacts

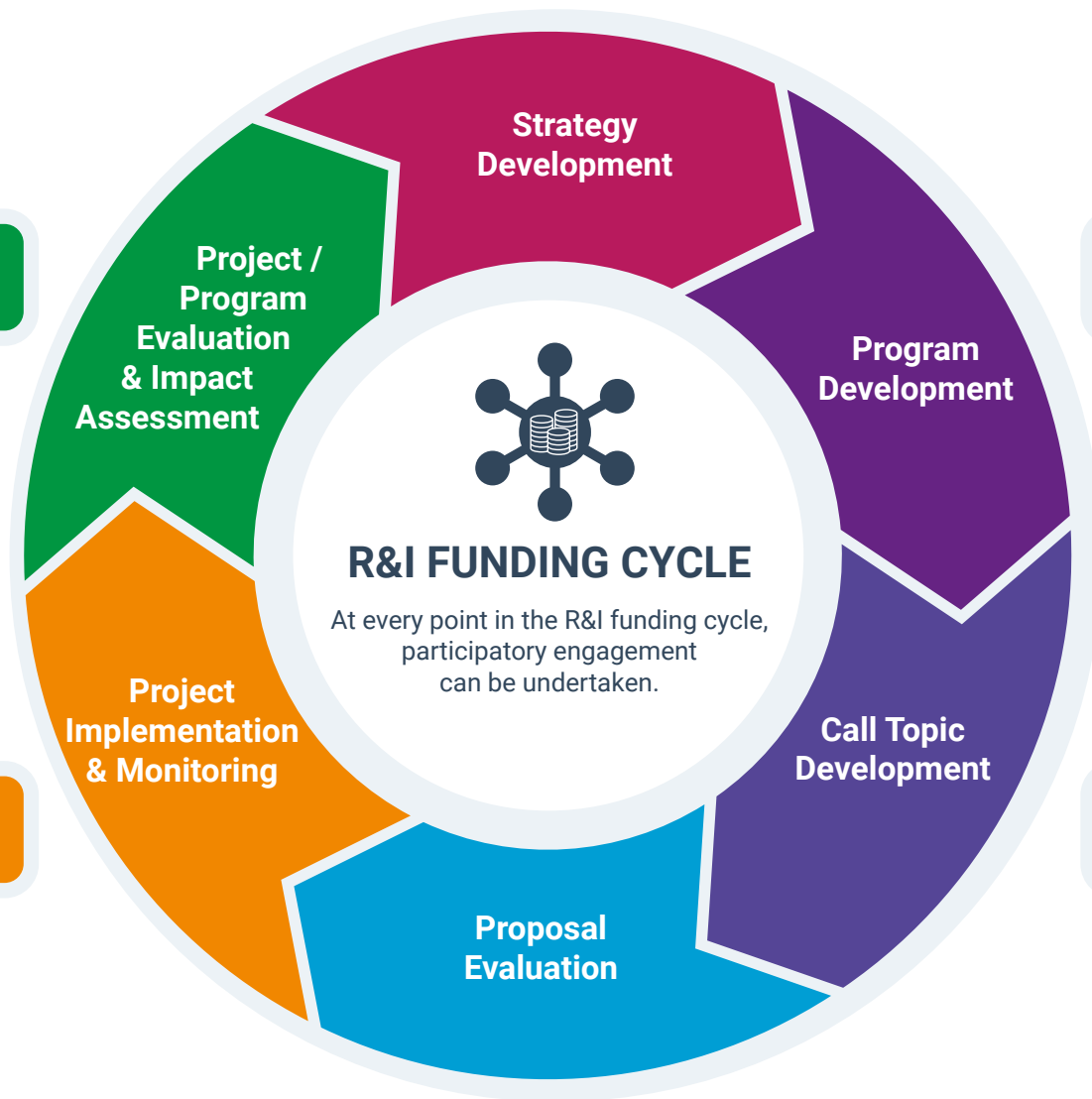
Monitoring of project activities and compliance. Might include mentoring and training

Development of multi-year (thematic) R&I priorities

Development and management of funding programs

Development of call topics and launch of calls for proposals. Proactive program management

Evaluation of proposals and selection of projects for funding, including ethics review



Schuerz, Stefanie (2023): Research and Innovation Funding Cycle. DOI: [10.5281/zenodo.8096861](https://doi.org/10.5281/zenodo.8096861)



## B. Which type of activity is targeted by the participatory process?



### **ACTION B2: Remove barriers for participation**

Reflect on any barriers for participation that might exist for different groups of stakeholders and how to address these. Barriers can include location and venue accessibility (e.g. geographic location / distance, connectedness via public transport, and architectural design / wheelchair accessibility); the accessibility of the technologies employed for the activity (e.g. digital technologies and associated costs); the flexibility needed to participate in a process (e.g. in terms of time and money) and what your process might compete with (e.g. paid employment, care duties, health management and recuperation time, other volunteer work). Other potential barriers might arise from power structures and institutional exclusionary practices (e.g. imbalances arising within a group of participants, the participation of certain populations being vetoed by decisionmakers, or certain groups excluding themselves due to discomfort or fear of certain institutions). Develop concrete solutions to address these barriers, such as providing childcare on location, choosing accessible venues, and covering associated costs. Think about which participant groups you are reaching and which you are excluding.

### **SHOWCASE**

UEFISCDI used a world café approach to involve citizens in validating and enriching parts of the Romanian National Strategic Agenda for Research. This list of societal challenges and leading questions, developed by experts, was aligned with the needs and experiences of citizens. While the take-up of citizen inputs could not be guaranteed beforehand, some inputs were integrated in the agenda after all, with one entirely new topic developed from the citizen inputs. In this, the format of engagement was helpful as it allowed for rich exchange and enabled the agency to include a topic they had not considered before.





## C. Which types of participants are targeted?



### **ACTION C1: Determine which stakeholders to engage and why, followed by interlinking the participatory process, context, and stakeholder types**

It is important to understand which stakeholders it might be important to involve in a process, and why. This could mean including stakeholders affected by, or with, specific knowledge or experience of an issue, and considering the specific role and relative power stakeholders have within a system or process. It also entails a broader reflection on aspects such as gender, age, socio-economic background, dis/ability, geographic location, as well as stakeholders' proximity to the R&I process. These specifications allow for a better understanding of the field and the identification of groups that may have been overlooked. It also helps to understand the potential needs of participants to meaningfully take part in a process. Mapping potential stakeholders and their interests ensures that the type of participatory process appropriately addresses both the context and the stakeholders involved<sup>26</sup>. Consider what type of representation is needed to obtain the desired contribution. For instance, do participants need to reflect the diversity of society, or should the process focus on specific stakeholders? As an example, matters of representation become important when interested in specific user groups or marginalized stakeholders.

### **SHOWCASE**

FFG used an online survey to broadly consult people living in Austria in the definition of topics for a specific funding call focused on health topics, climate change, demographic change, and ICT solutions. As these topics impact all Austrian residents to some degree, FFG chose to make the survey openly accessible to all. They recruited participants through internal and external efforts and promoted the survey through multiplier organizations and through their newsletters. FFG learned that recruitment efforts benefit from organizational and financial flexibility as a number of surprises and additional costs emerged. This included much richer qualitative inputs than expected, but also significant self-selection bias impacting the make-up of the participant group.



## C. Which types of participants are targeted?



### **ACTION C2: Determine how participants should be recruited, taking into account stakeholder representation, selection bias, and feasibility**

After potential participants have been identified, it is important to consider how they should be recruited, taking into account stakeholder representation, selection bias, and feasibility. Identification and recruitment of participants often takes more time and investment than anticipated and may become a prolonged, iterative process in more lengthy participatory endeavors. Reflect on the benefits and drawbacks of different recruitment techniques (e.g. feasibility versus selection biases), and target your approach based on stakeholders' specific needs as identified in C1. While recruitment can be challenging, stakeholders are more inclined to participate if the process is in their interests. Timing can be a decisive factor. Consider, for instance, whether holidays or other factors may restrict a participant group's involvement. Possible recruitment techniques include:

- **Existing organizational networks:** The organizer's existing stakeholder network provides an opportunity to recruit participants. Stakeholders can, for example, be contacted through social media or newsletters.
- **Snowballing techniques:** Asking participants for referrals to other potential participants can enlarge the existing pool of participants.
- **External recruiters:** Recruitment can be outsourced to experienced parties. Make sure that recruiters are sensitive to ethical issues relating to stakeholder participation.
- **Multiplier partners:** External partners, such as municipalities, intermediaries, and influencers, can help recruitment efforts by providing access to their stakeholder network. Persuading these multipliers to collaborate tends to be easier when they share similar interests with the participatory process.



## D. What are ethical issues and risks?



### **ACTION D: Identify ethical issues and tackle them appropriately**

With clarity on the participatory process and potential participants, it becomes easier to assess potential ethical issues and determine where and how a process should be adapted. Ethics experts could help identify, understand, and mitigate ethical issues..

#### **Consider the following potential issues in relation to your R&I processes:**

- **In project proposals:** Issues of human dignity, power, intellectual property, privacy and data protection, transparency, and biases (e.g., gender bias, bias towards the able-bodied, etc.) should be considered when planning the process and outcomes of research and innovation.
- **In project executions:** Issues relating to personal data; discrimination; stigmatization; fixation on technology acceptance; vulnerable groups; privacy; safety; social responsibility of researchers; informed consent; social roles in the application context; use of ethically sensitive findings; manipulation and guardianship through technology.
- **In evaluation processes:** Common ethical risks in relation to stakeholders' legitimacy, lack of ethical expertise; communication of funding calls; conflicting interests.

#### **Consider the following issues that may arise in general:**

- **Informed consent:**
  - Informed consent procedures should be employed to build a baseline understanding of the process among those involved.
  - Ensure that you choose an appropriate informed consent process and format for the target group.
  - Use accessible language, keep the document to a reasonable length, and consider creative approaches such as movies and comic strips, or dynamic informed consent to address groups farther away from the R&I system.
- **Financial compensation:**
  - Determine if, to whom, and how much financial compensation should be given.
  - Compensation should take into account potential barriers to participation, but shouldn't be an incentive in itself.
- **Methods:**
  - When participation is made a mandatory requirement for funded projects, this might raise the hurdle for diverse and new institutions to access funding. Support and training could mitigate this risk.
  - Identify the suitability of the selected participatory process regarding i) if participation is warranted in the given process; ii) if stakeholder participation would benefit from additional support.



## D. What are ethical issues and risks?

- **Knowledge / awareness:**
  - Consider what might be needed to ensure that participants understand R&I. For example, a warm-up exercise might be provided for participants. Ensure participants have enough time to process new information.
  - Identify what knowledge may be helpful for the participatory process. Try to foresee group dynamics that may emerge as a result of information asymmetries. Ensure you have (access to) the required expertise to identify and address ethical issues.
- **Disadvantaged stakeholders:**
  - Identify if, who, and how stakeholders may be disadvantaged. This can partly be determined on the basis of participant input.
  - Engage with disadvantaged stakeholders prior to the participatory process to understand their needs.
  - Customize participatory processes to disadvantaged stakeholders so that they can participate in a meaningful way.
- **Research integrity:**
  - Identify if, and how, the participatory process might affect the researchers' integrity.
  - Align the participatory process with frameworks, standards, and/or codes of conduct on research integrity<sup>27</sup>.
- **Assess the overall risk to actors in the process, including**
  - physical (direct harm, long-term harm)
  - psychological (traumatizing methods, sensitivity of questions, ...)
  - social (stigmatization, discrimination, ...)
  - data protection, privacy, confidentiality
  - the insurance status of each participant

### SHOWCASE

RCN concluded that ethical issues and risks must be explored together with stakeholders. They therefore organized three workshops to collectively reflect on what challenges emerge in participatory contexts, and how they, as a research funding organization, can better align ethics and citizen involvement. They identified issues in relation to data privacy and the compensation of participants, which both required further consideration. Innoviris encountered political interference in their stakeholder engagement process caused by misaligned expectations and exacerbated by power differentials. They concluded that it was important to involve key stakeholders from the very beginning and maybe even seek contractual agreements with all parties, especially political ones, detailing the plans from the outset in order to avoid similar roadblocks.



## E. How can equal and meaningful dialogue be fostered?



### **ACTION E: Consider how equal and meaningful dialogue can be established and safeguarded in light of participants' characteristics and vulnerabilities**

Ensure that the design and implementation of participatory processes fosters equal and meaningful dialogue among participants. Contemplate whether an experienced (external) moderator would improve the process. Think about forms of representation, types of participant, and reciprocal relationships, taking into account possible power imbalances. The following non-exhaustive list of considerations are important:

- **Representation:** Consider who is excluded and included by reflecting on the balance between diversity and representation (proportionality). When selecting a group of participants, take into account possible (over-) representation of minorities.
- **Power:** Make sure all participants are heard and try to reduce power imbalances. These imbalances may result from the participants' differences in personality, capacity, knowledge, and resources. It can, for instance, help to reduce information asymmetries by providing or withholding information. In addition, try to identify any conflicts that may need to be navigated. A skilled facilitator or ombudsperson can play an important role here.

- **Empowerment:** Take measures to enable your participants to actively participate in, influence, and benefit from the R&I process and its outcomes. Allow them to make decisions and develop ownership of the process.
- **Exploitation:** When including minorities and/or vulnerable stakeholders, ensure that they are not negatively affected by the participatory process. If needed, provide forms of adequate compensation either before, during, or after the process, on a case-by-case basis.
- **Vulnerability:** Recognize that there are many aspects to vulnerability that are often difficult to identify. Pay specific attention to aspects that give rise to vulnerabilities such as one's experiences, abilities (including language skills), identity, resources, values and worldviews. Participants are best placed to recognize whether they are vulnerable. Trust their judgement and accommodate for their vulnerability.

### **SHOWCASE**

Power imbalances may impede equal and meaningful dialogues, and frequently emerge from information asymmetries – for instance between scientists and citizens. VDI/VDE-IT therefore deliberately considered whether they should hand out information, to whom, and when. Information management and active facilitation proved useful for fostering constructive debates in which everyone is heard.



## F. How should participatory processes be monitored and reflected upon?



### **ACTION F1: Monitor and collectively reflect on the participatory process and outcomes**

To safeguard ethical aspects of participation, it is important to monitor potential issues during the implementation and evaluation of a process, as laid out in action-set D. This can be done using qualitative and quantitative performance indicators and through continuous feedback from participants. Continuously and collectively reflecting upon expected or unexpected performances and outcomes will help to improve ongoing and future participatory processes. Expectations may be adapted if needed, following a possible deviation from pre-set monitoring indicators.

**This action is complementary to A2 and A3**



### **ACTION F2: Reflect on the following aspects**

- Verify if and how matters of representation and inclusion are/were addressed throughout the participatory process.
- Consider the balance of input from participants in the decisions made during participatory processes.
- Determine whether the goals of the participatory process will be or have been achieved.
- Identify how the biases of your participatory activities affected the process and its results.



### **ACTION F3: Launch a transparent process allowing participants to interact and reflect**

Depending on the scope of the participatory activity and organizational capabilities, a collective reflection on the participatory process helps to develop an understanding of the participants' experiences. This can for instance be achieved through a short focus group or survey. Such feedback should be used as the main assessment of the process, indicating potential needs for improvement.



## F. How should participatory processes be monitored and reflected upon?



### **ACTION F4: Communicate how the input of participants is used**

Reflect on the input of participants, its added value, and how it did (not) feed into outcomes. Why and how were certain decisions made? Communicate this to participants, and ensure they feel valued. In some cases, this may include a financial compensation (see also action D) or an official acknowledgement.



### **ACTION F5: In view of future reference, all reflections answering the framework's actions could be documented and saved**

It may be beneficial to document stakeholders' answers for the benefit of future participation activities. This also helps with accountability.

### **SHOWCASE**

All pilots reflected upon their participatory process and recruitment efforts. They reflected on their challenges, success stories, and lessons learned. Many of these insights emerged from collective reflections on participants' experiences. These insights were documented for future use. For example, CDTI concluded that they needed a slight change in the scope of their participatory process to reshape the societal impact of their funding efforts.

# Glossary

The categories and definitions outlined below reflect the work undertaken in PRO-Ethics. They emerged as common references during the project, and are important for the implementation of ethical participatory processes, particularly in relation to the activities of research funding organizations.

## **Bias**

In the context of our work, bias is relevant in two ways: First, as often unconscious preconceived opinions, beliefs, or attitudes that influence how stakeholders in R&I define and address problems, set up processes, and perceive and interpret data. This might entail a preference for the inclusion of particular stakeholder groups over others (or a perceived greater validity of some perspectives), a predilection for specific outcomes, and an overall skewing of the process towards certain – often hegemonic – power structures. Second, as systematic errors in the vein of statistical bias that distort the process as well as the collected data and its analysis. While often unintentional, flawed methodologies, selection biases and information biases can have significant ramifications for the quality of an R&I process and its outcomes, while also negatively impacting its participants. Thus, it is essential to be mindful of potential biases and take active steps to identify and address them in order to ensure the quality and equality of an R&I process.

## **Citizens**

While “citizen” is not a term that should be employed uncritically<sup>28</sup>, we decided to draw on this category as an established umbrella term that includes the general public, lay people, and citizens as persons (or collectives) with civic expectations<sup>29</sup>. Moreover, since end-users can be categorized as citizens as well, this distinction serves to underline the general dimension of involvement, referring to the broader sense of “public participation”.

## **Civil society organizations**

Civil society organizations are not-for-profit organizations that may represent specific groups of citizens, but whose knowledge and leverage differs to that of individual citizens. They may defend interests, often professional interests (trade unions), or causes (e.g., animals, environmental issues), or rights (e.g., minorities, women).

## **Communication and dissemination**

In the context of R&I processes, communication refers to the sharing of contents and results of R&I activity in an accessible manner, increasing its public visibility. It is distinguished from dissemination by its primary target groups, as dissemination is targeted more towards a scientific audience, but also policymakers and industry representatives. Both communication and dissemination tend to be one-way exchanges of information towards any type of stakeholder.



## **Co-creation**

We use co-creation to encompass comprehensive collaboration between all stakeholders of an R&I process, from its inception to its conclusion. Hailing more from the context of an R&I project, co-creation covers all stages of the research cycle, from the definition of a research question to the evaluation of a project and assessment of its impact. While this has not yet been similarly established as a valid approach, this process can be mirrored in the context of the R&I funding cycle, starting from the development of the R&I funding strategy and ending with the evaluation and impact assessment of funded projects and the overall funding program. As an umbrella term, co-creation also covers the concepts of co-design (collaboratively defining a problem and its solutions by designing technologies, processes and solutions), co-production, and co-development.

## **Collaboration**

While collaboration broadly covers the process of people or organizations working together to achieve a goal, in the context of our framework it is important that collaboration is equal and meaningful, i.e., allow all involved stakeholders to contribute towards and impact the process and its outcomes.

## **Consultation**

Processes of engagement (see definition of 'engagement') where any group of citizens or stakeholders are asked to provide input on an issue, process, policies or programs. These inputs are not guaranteed to be taken up in a meaningful manner, in that they make an impact on processes and their outcomes.

## **Diversity, equality/equity, inclusion**

Diversity as a term reflects the many different ways we understand and categorize people (e.g., according to gender and gender identity, sexual orientation, race and ethnicity, dis/ability, socioeconomic status, etc.). Inclusion is about providing equal access to take part in a process or activities. Thus, diversity in participation is about including a range of perspectives and experiences to create outcomes that work for more than just a few. In this context, equality refers to everyone being treated equally and receiving the same opportunities and resources, while equity is about addressing individuals' specific needs. It is essential to address bias and discrimination to achieve both equality and equity for diverse groups of people, but also to ascertain the quality of R&I and mitigate potential harms it may create<sup>30</sup>.

## **Empowerment**

Empowerment is about enabling individuals and groups to actively participate in, influence, and benefit from R&I processes and their outcomes. It aims to distribute power equitably and in turn have a positive impact both on the concrete processes at hand and wider society. Empowerment can entail the provision of knowledge, ensuring that people have access to and an understanding of scientific findings. And it can entail participation, which is about inviting a broad range of relevant stakeholders to the table – including also underrepresented and marginalized groups – while ensuring that all participants in a process are heard and have a hand in shaping the course of the R&I endeavor.

## **End-users**

End-users are the (presumed) groups and individuals intended to make use of the end product (including solutions and services) of an R&I process. While the concrete (groups of) end-users cannot always be foreseen in their entirety, assumptions about their needs are always inscribed into a technology, process, service or solution. Engaging potential end-users in the development of R&I is intended to better meet their needs, and thus heighten the chance of the outputs to be useful and used.

## **Engagement**

In this document, engagement is used as an umbrella term for different types of one-way and two-way exchange, as well as collaboration between stakeholders from R&I (such as professional researchers and research funding organizations) and stakeholders beyond the R&I system (such as citizens, end-users, civil society organizations, NGOs and so on). This may include forms of communication, consultation, or more intense approaches to participatory engagement such as co-design and co-creation.

## **Ethics**

Ethics is the discussion of and reflection on moral values and norms (in short: morality). The adjective "moral" indicates that those values and norms have a special status, typically taking the form of obligations and prohibitions. Their special status is manifested by the fact that moral rules are accompanied by praise and blame, rewards and punishments, to motivate people to live according to these norms and values<sup>31</sup>. The adjectives ethical and moral are often used interchangeably.

## **Evaluation (of projects and programs)**

This category encompasses several types of evaluation: evaluation of project proposals (i.e., the ethical and scientific evaluation) as part of the selection process intervening in funding schemes; the interim and ex-post evaluation for projects and programs that received funding; and program evaluation. Evaluation reflects on the implementation and results of an R&I endeavor to ascertain its overall quality, and can focus both on processes and outcomes/results. In contrast, impact assessment always focuses on the broader long-term effects of an R&I process.<sup>32</sup>

## **Experts**

This category serves to identify individuals who are enrolled as internal or external experts in R&I processes. In the context of this document, we include both lay and professional experts in this category. For instance, citizens may be involved in an R&I process as 'experts by experience', providing insights into their lifeworlds and value systems. Experts may also be individuals with any sectoral/disciplinary expertise (e.g., with a background in medicine, psychology, sociology, philosophy – among others). Consequently, participants might bring different kinds of expertise and different types of knowledge (e.g., tacit, formal, endogenous, living world, etc.) to an R&I process.

## **Fairness**

As a concept related to diversity, equality/equity, and inclusion, fairness encompasses ensuring equal access to resources and opportunities, unbiased decision-making processes, and outcomes that don't unjustly advantage or disadvantage certain groups. Like other ethical principles covered here, the specific interpretation and implementation of fairness may vary depending on the context.

## **Impact assessment**

Impact assessment focuses on the longer-term and broader effects of an R&I process. It entails the definition of specific qualitative and quantitative outcomes and indicators for achieving impact, as well as instruments to measure these indicators. Evidence is then gathered and analyzed to show concrete results. Depending on the concrete focus of an R&I process, it might aim to achieve societal, political, institutional, scientific, economic, environmental or technological impact. As impact necessarily unfolds over time, change usually unfolds beyond the lifetime of an R&I process, making it difficult to substantiate.

## **Monitoring**

The systematic observation of the implementation of funded projects and their results in the context of RFO funding schemes. Monitoring is usually carried out internally with support by external experts, e.g., for interim or final reviews. Ex-post monitoring of results can also involve other stakeholders, in addition to the involvement (feedback) of program beneficiaries.

## **Participants**

Participants are defined as persons who take part in participative processes. In this document, we primarily use this term for non-traditional stakeholders of an R&I process such as citizens in the broadest sense, (end)-users of a technology, residents of an area, people affected by an issue, entrepreneurs, project beneficiaries, and so on. Participants are engaged in such processes due to their specific knowledge, perspectives and/or interests they bring to the table. Participants can be individuals or representatives of institutions or groups and may include vulnerable groups such as patients, children, or older adults. Often, there is an overlap in categories of participants, as individuals may draw expertise from different fields and experiences. In each instance, it is important to develop an awareness of the characteristics of those participating, and address them in the design and implementation of a participatory process.

## **Participation**

While there is no uniform definition of participation, the term is often described as a form of engagement that allows (potentially) affected stakeholders to partake in decision-making for R&I. There is a graduation to the intensity of participatory processes, ranging from limited and short-term involvement to a comprehensive collaboration between all stakeholders of an R&I process, from inception to completion. Truly participatory practices empower stakeholders to shape decisions in accordance with their own values and worldviews.

## **Privacy**

Privacy is a fundamental right that refers to a person's ability to control their personal information and decide when, how, and to what extent such information is shared with others. There are clear regulations and compliance procedures structured by the GDPR and other relevant national and international law, which entail provisions for the collection, processing, dissemination and storage of personal data and the gathering of (informed) consent. In participatory R&I processes, informed consent is especially important as it opens up the conversation to consider the focus and context of a process, its goals, any associated risks, the intended scope of participation and roles of involved stakeholders, as well as the expectations people bring to the table. It is an essential tool for creating transparency from the very outset.

## **Program design**

In the context of research and innovation, program design refers to the identification of program objectives and of R&I priorities, resulting in the definition of funding opportunities, while adhering to specific regulations.

## **Research ethics and research integrity**

Research integrity refers to the process of conducting research in a way which allows others to have trust and confidence in the methodologies used and resultant findings. Data, methods, interpretation and presentation/reporting must meet established and appropriate scientific, legal and professional standards. Research ethics pertains to the moral issues that arise in research design and implementation, for instance in relation to the protection of humans, animals, the environment, data, as well as the proper protection of other objects.<sup>33</sup>

## **Representation**

The substitution of an individual or class in place of a person (such as a sibling of a severely ill person who is not able to express her/his own preferences). Representation needs to be fair, but the precise meaning of fairness is context dependent. This may mean that some contexts require additional efforts to include particular stakeholders.

## **RFO activities**

In the context of PRO-Ethics, RFO activities and processes refer to the entirety of the R&I funding cycle: 1) strategy development; 2) program/funding scheme development; 3) call topic development and call launch; 4) proposal evaluation; 5) project implementation and monitoring (which might include training and support of project beneficiaries); and 6) project/program evaluation and impact assessment.

### **Scientists and other research institute representatives**

Scientists (of any scientific or technical field) or other representatives of research institutions involved in RFO processes, either for their individual expertise or for their affiliation to a research institution, but speaking primarily for themselves. This is separate to stakeholders involved explicitly as representatives of their organizations. This category also includes researchers, who are individuals working for a legal entity (SMEs, universities, research institutes) conducting public or privately funded research.

### **Stakeholders**

In the context of R&I funding and program development, the term “stakeholder” usually refers to businesses, institutional representatives and other interest groups that are traditionally included in the processes of R&I funding. For PRO-Ethics, we have broadened this definition of stakeholders to anyone with a stake in an R&I process, i.e., anyone who may affect or be affected by it in any way. In the project, we focused mainly on the participation of “non-traditional” stakeholders, by which we mean anyone not usually included in the activities of research funding organizations and other R&I processes. Among these are citizens, in the broadest sense, residents of an area, end-users of a technology, people affected by an issue, beneficiaries of funding calls, entrepreneurs, and others. Due to the broad nature of our understanding of stakeholder, our use of the term throughout the document includes both traditional and non-traditional stakeholders, as well as anyone else involved in an R&I (funding) process such as research and program managers, scientists, experts, consultants and facilitators.<sup>34</sup>

# Endnotes

1. See for instance how participatory research practices are being actively supported by the European Commission (EC) through their inclusion in the various funding instruments of Horizon Europe, including the clusters and missions, to address “wicked problems”.
2. The Horizon-funded PSF MLE on Citizen Science Initiatives – Policy and Practice pointed out the importance of dedicated funding as an instrument for enabling citizen science and engagement more broadly. See: European Commission, Directorate-General for Research and Innovation, 2023. Mutual learning exercise on citizen science initiatives: policy and practice. Fourth Thematic Report: Enabling environments and sustaining citizen science. Publications Office of the European Union. <https://data.europa.eu/doi/10.2777/305248>
3. For an in-depth discussion on this issue, see Giannelos, K., Reber, B., Doorn, N., Hövel, P., Lanzerath, D., Tambornino, L., 2021. PRO-Ethics D1.2 Paper Manuscript on Participatory Practices and Ethics Issues in Innovation. Zenodo. <https://doi.org/10.5281/zenodo.7980377>
4. Still, it must be noted that soft governance of algorithmic systems through ethics – even if formalized and ostensibly regulated – is often insufficient, and sometimes even employed strategically to distract both legislators and society from more fundamental issues when it comes to the intersection of societal, commercial, academic, and political interests. For data justice as a valuable tool for approaching data and AI governance, see: Solano, J.L., Martin, A., de Souza, S., Taylor, L., 2022. Governing data and artificial intelligence for all: Models for sustainable and just data governance. European Parliament. Directorate General for Parliamentary Research Services. Brussels. <https://www.doi.org/10.2861/915401>
5. Van den Hoven, J., 2014. Responsible Innovation: A New Look at Technology and Ethics. In M. J. Van den Hoven, N. Doorn, T. Swierstra, B. Koops & H. Romijn (Eds.), Responsible Innovation 1: Innovative Solutions for Global Issues. Dordrecht: Springer, pp. 4-7.
6. Reber, B., 2016. Precautionary Principle, Pluralism and Deliberation: Science and Ethics. London/New York: ISTE/John Wiley & Sons.
7. From the UNESCO website: <https://www.unesco.org/en/open-science/about> (accessed 26.05.2023) Read the Recommendations here: UNESCO, 2021. UNESCO Recommendation on Open Science. United Nations Educational, Scientific and Cultural Organization. <https://doi.org/10.5281/zenodo.5834767>
8. From the ECSA website: <https://www.ecsa.ngo/> (accessed 26.05.2023) Read ECSA’s 10 Principles of Citizen Science here: ECSA (European Citizen Science Association), 2015. Ten Principles of Citizen Science. <https://doi.org/10.17605/OSF.IO/XPR2N>
9. OECD, 2020. Addressing societal challenges using transdisciplinary research. OECD Science, Technology and Industry Policy Papers. No. 88, p. 9. OECD Publishing. Paris. <https://doi.org/10.1787/0ca0ca45-en>
10. Von Schomberg, R., 2012. Prospects for Technology Assessment in a framework of responsible research and innovation. Technikfolgen abschätzen lehren: Bildungspotenziale transdisziplinärer Methode, pp. 39-61. Wiesbaden: Springer VS. For more information and practical support in the application of ethics in RRI, visit <https://rri-tools.eu/ethics> (accessed 26.05.2023).
11. Stilgoe, J., Owen, R., Macnaghten, P., 2013. Developing a framework for responsible innovation. Res. Policy 42, pp.1568–1580. <https://doi.org/10.1016/j.respol.2013.05.008>
12. Harremoës, P., Gee, D., MacGarvin, M., Stirling, A., Keys, J., Wynne, B., Guedes Vaz, S., 2001. Late lessons from early warnings: the precautionary principle 1896-2000, Environment issue report. Copenhagen, Denmark. <https://doi.org/10.4324/9781315071985-14>
13. DGRI, 2020. Strategic Plan 2020-2024, p. 4. [https://commission.europa.eu/system/files/2020-11/rtd\\_sp\\_2020\\_2024\\_en.pdf](https://commission.europa.eu/system/files/2020-11/rtd_sp_2020_2024_en.pdf)
14. On the necessity and pitfalls of better aligning research policy and ethical and societal values, see: Novitzky, P., Bernstein, M.J., Blok, V., Braun, R., Chan, T.T., Lamers, W., Loeber, A., Meijer, I., Lindner, R., Griessler, E., 2020. Improve alignment of research policy and societal values. Science 369, pp. 39–41. <https://doi.org/10.1126/science.abb3415>

15. Von Schomberg, R., 2013. A Vision of Responsible Research and Innovation, Responsible Innovation: Managing the Responsible Emergence of Science and Innovation in Society. <https://doi.org/10.1002/9781118551424.ch3>
16. Grunwald, A., Achternbosch, M., 2013. Technology Assessment and Approaches to Early Engagement, in: Doorn, N., Schuurbiers, D., Van de Poel, I., Gorman, M.E. (Eds.), Early Engagement and New Technologies: Opening up the Laboratory. Springer, pp. 15–34.
17. Wiarda, M., Sobota, V.C.M., Janssen, M.J., Kaa, G. Van De, Yaghmaei, E., Doorn, N., 2023. Public participation in mission-oriented innovation projects. *Technol. Forecast. Soc. Chang.* 191, 122538. <https://doi.org/10.1016/j.techfore.2023.122538>
18. Arnstein, S.R., 1969. A Ladder Of Citizen Participation. *J. Am. Inst. Plann.* 35, pp. 216–224.
19. Rowe, G., Frewer, L.J., 2000. Public participation methods: A framework for evaluation. *Sci. Technol. Hum. Values* 25, 3–29. <https://doi.org/10.1177/016224390002500101>
20. Stirling, A., 2008. “Opening up” and “closing down”: Power, participation, and pluralism in the social appraisal of technology. *Science, Technology and Human Values* 33, pp. 262–294. <https://doi.org/10.1177/0162243907311265>
21. Fung, A., 2008. Democratizing the Policy Process. In R. E. Goodin, et al. (Eds), *The Oxford Handbook of Public Policy*, Oxford: Oxford University Press, pp. 681-682.
22. See e.g., Eitzel, M., Cappadonna, J., Santos-Lang, C., Duerr, R.E., Virapongse, A. West, S.E., ... Jiang, Q., 2017. Citizen Science Terminology Matters: Exploring Key Terms. *Citizen Science: Theory and Practice*. pp. 1-20. <https://doi.org/10.5334/cstp.96>
23. In this document, we use “stakeholder” as an umbrella term covering everyone who might be affected by, or might affect an R&I process. Due to the focus of PRO-Ethics, our perspective is framed by the endeavor to ethically engage “non-traditional” stakeholders.
24. For critical discussions of the term “vulnerability” in the context of (participatory) research, see: Brown, K., Ecclestone, K., Emmel, N., 2017. The many faces of vulnerability. *Soc. Policy Soc.* 16, 497–510. <https://doi.org/10.1017/S1474746416000610> and Aldridge, J., 2015. Participatory research: Working with vulnerable groups in research and practice. Policy Press. <https://doi.org/10.2307/j.ctt1t8933q>
25. There is a diversity of participatory methods that could be employed in any given process. These should be chosen carefully, considering the intended goals of the process, the available resources, and the specificities of the stakeholder groups to be involved. For more information, see section 3.2.1 (above).
26. Working with non-scientific participants in a scientific context entails a meeting of different frames of reference. In turn, it is important to understand the roles of R&I actors (such as researchers) and participants, including the scopes and limits of their responsibilities. In particular, it is important to address questions of research integrity and safeguard the quality of the scientific process while taking care not to exploit any involved actors.
27. Most prominently, this includes the ALLEA European Code of Conduct for Research Integrity. The most current version of this living document can be accessed via ALLEA’s website: <https://allea.org/code-of-conduct/>
28. See e.g. Eitzel, M., Cappadonna, J., Santos-Lang, C., Duerr, R.E., Virapongse, A. West, S.E., ... Jiang, Q., 2017. Citizen Science Terminology Matters: Exploring Key Terms. *Citizen Science: Theory and Practice*. pp. 1-20. <https://doi.org/10.5334/cstp.96>
29. In this category, the main boundaries for the “citizens” category are anchored in the citizens/stakeholders distinction.
30. Ruzycski, S.M., Ahmed, S.B., 2022. Equity, diversity and inclusion are foundational research skills. *Nature Human Behaviour* 6, 910–912. <https://doi.org/10.1038/s41562-022-01406-7>
31. Swierstra, T., 2017. Introduction to the Ethics of New and Emerging Science and Technology. In: R. Nakatsu et al. (eds.), *Handbook of Digital Games and Entertainment Technologies*, Springer, Dordrecht. [https://www.doi.org/10.1007/978-981-4560-50-4\\_33](https://www.doi.org/10.1007/978-981-4560-50-4_33)
32. For a closer look at the complexities of evaluating participatory processes – specifically in the context of citizen science – see Schaefer T., Kieslinger B., Brandt M., van den Bogaert V., 2021. Evaluation in Citizen Science: The Art of Tracing a Moving Target. In: Vohland K. et al. (eds) *The Science of Citizen Science*. Springer, Cham. [https://doi.org/10.1007/978-3-030-58278-4\\_25](https://doi.org/10.1007/978-3-030-58278-4_25)
33. Braun R., Ravn T. et al. (2019) RE/RI expert set of indicators for e-database. ENRI Deliverable 6.2. ENRI Network.
34. This is in line with the ISO 21500 definition of the term. See <https://www.iso.org/standard/75704.html>

# Contact

contact@pro-ethics.eu

ZSI - Zentrum für Soziale Innovation GmbH  
Linke Wienzeile 246  
1150 Vienna, Austria  
institut@zsi.at

## Thank you

